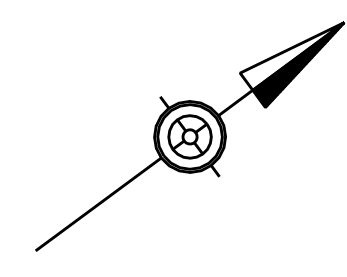


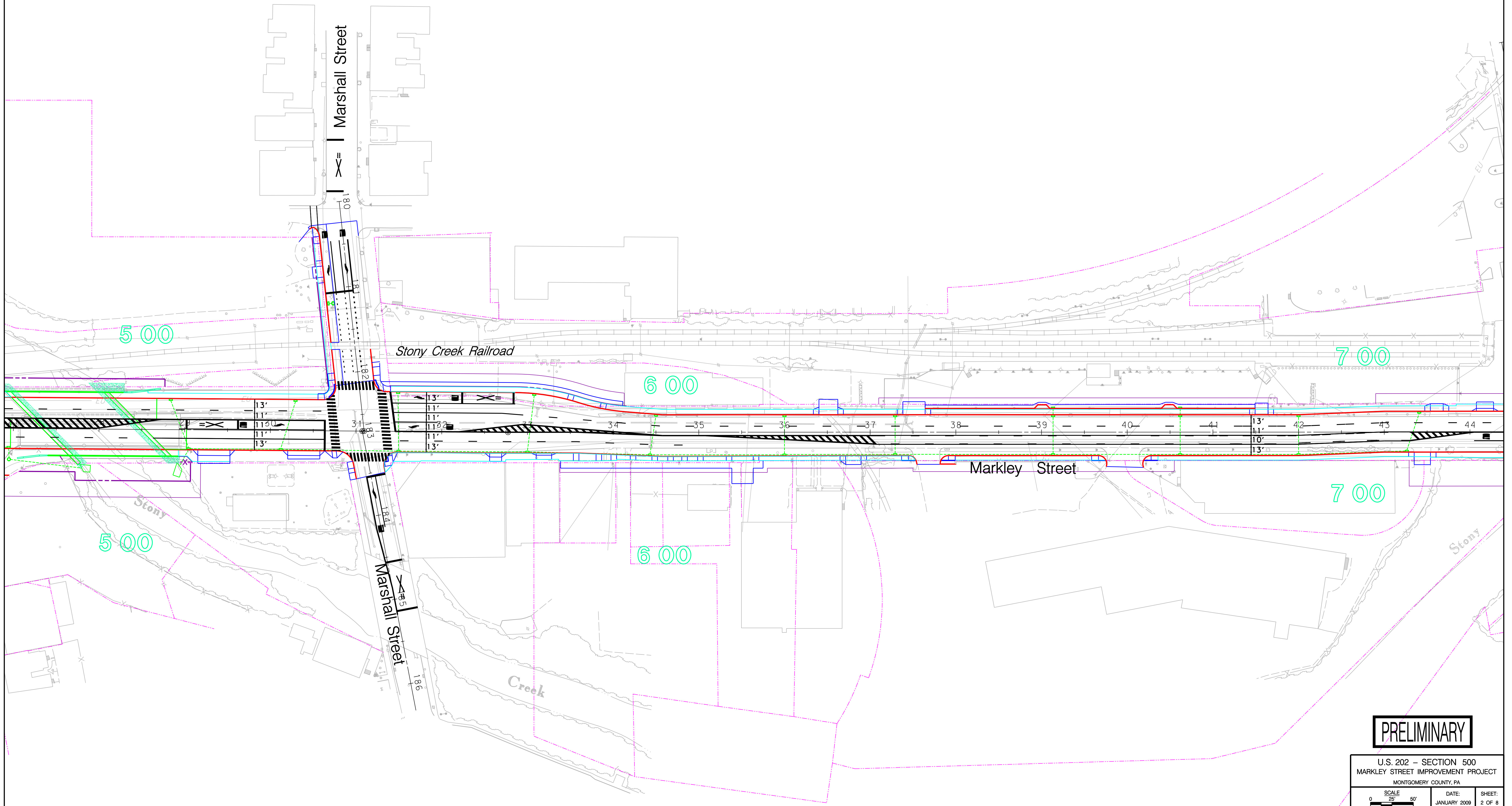
**LEGEND**

- PROPOSED CURB
- PROPOSED SIDEWALK
- PROPOSED PAVEMENT MARKINGS
- 000 BLOCK NUMBER
- PROPERTY LINES
- REQUIRED RIGHT-OF-WAY
- TEMPORARY CONSTRUCTION EASEMENT
- PROPOSED DRAINAGE



# MARKLEY STREET

## MARSHALL STREET THROUGH ELM STREET



**PRELIMINARY**

U.S. 202 – SECTION 500  
 MARKLEY STREET IMPROVEMENT PROJECT  
 MONTGOMERY COUNTY, PA

SCALE 0 25' 50'	DATE: JANUARY 2009 SHEET: 2 OF 8
--------------------	-------------------------------------